

# Eden Isles Community's Surge Protection Effort

## Timeline Introduction

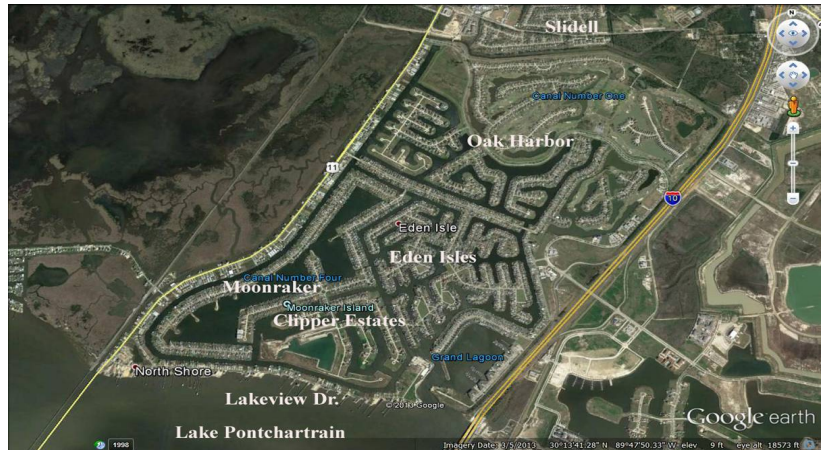
### Eden Isles: A Critical Coastal Community at Risk

Eden Isles is the most vulnerable and densely populated community in Louisiana. Located south of Slidell between Highway 11 and Interstate 10 and would rank as the fourth-largest city in St. Tammany Parish if incorporated.

Developed in 1969 as a premier waterfront community, Eden Isles was built with resilience in mind. Over 900 acres of waterways were dredged to elevate the land to seven feet above sea level. The community features a marina, golf course, underground utilities, its own water and sewerage plant, with a fire station and sheriff station. With more than \$1 billion in property and infrastructure, it remains one of St. Tammany parish's most valuable assets.

Eden Isles homes are constructed on concrete slabs, in accordance with the base flood elevations of their time. Historically, homes did not flood until Hurricane Katrina. Since then, however, the community's risk has sharply increased due to:

- Coastal erosion
- Rising sea levels
- Loss of natural floodplains from upstream development
- Levees built along St. Bernard, Orleans, Jefferson, St. Charles and St. John parishes



According to the Louisiana Coastal Protection and Restoration Authority's (CPRA) 2022 study, Eden Isles now has the highest financial risk factor from storm surge of any community in Louisiana. To safeguard this critical community, CPRA has committed to delivering structural surge protection of at least 11 feet. The protection plan includes elevating Highway 11, elevating Lakeview Drive, and constructing a floodgate at the marina entrance.

### Eden Isles Demographic Data:

- Population of 8,000
- \$1.6 billion in home values (4,173 homes with a mean value of \$384,823 as of 2025)
- \$11.6 million community sewer & water facility
- \$3 million fire station with response units
- Hundreds of millions in public infrastructure such as paved roads with underground drainage and utilities, along with amenities such as a marina, a golf course, a hotel, restaurants, stores, office buildings, medical facilities, and a variety of businesses
- Land area: 3.23 sq. miles (2,000 acres)
- Waterways area: 1.4 sq. miles (900 acres)
- Public parks/common grounds area: 0.02 sq. miles (15 acres)

# Eden Isles Surge Protection Timeline

Latest update: September 2025



## 2006, The Eden Isles Flood Protection Committee (EIFPC) Is Created

- After Hurricane Katrina devastated Eden Isles, the EIFPC began working for flood protection, they made presentations and contacted local, state, and federal agencies expressing the need for comprehensive Lake Pontchartrain Basin protection (structures at the Chef Pass and Rigolets)

## July 2006, Not To Build Barrier - Biggest Mistake Made During 35-Years As An Army Officer

- Lieutenant General Colonel Elvin Heiberg III, commanded the U. S. Army Corps of Engineers (USACE), New Orleans District from 1974 to 1975, and head of the corps in 1985, (as Chief of Engineers in Washington) stated in his Times-Picayune newspaper editorial that his decision to stop fighting for the Lake Pontchartrain barriers was the biggest mistake he made during his 35 years as an Army officer.

### Gates still needed for lake, ex-corps head says

Re: "Save Our Wetlands called a positive force," Your Opinions, June 19.

In 1974-'75 I was the colonel commanding the U.S. Army Corps of Engineers New Orleans District. Several groups, including Save Our Wetlands, fought tooth and nail to stop the corps designing twin barriers at the east end of Lake Pontchartrain. The gates would have remained open except when a large storm approached. Those structures were to supplement what we knew would be problematic dikes and levees nearer to the city.

The corps felt strongly that those barriers were essential to blunt a hurricane's attack, especially from the east. Yet the opponents took the corps to court to stop work on them.

After I left New Orleans, a federal judge was somehow persuaded to direct that work cease on the barriers' designs. The mantra then: "Just build the levees higher." We knew that was the wrong answer.

Several years later, the corps had not completely given up on pushing again for those essential barriers. By 1985, I was head of the corps (as chief of engineers in Washington). My staff brought me a proposal to stop fighting for the barriers; the opponents in Louisiana were still as strong as when I had left a decade earlier.

I was discouraged and decided to stop fighting for the barriers any longer. I had concluded: "The judge and Louisiana have spoken — the corps simply had not convinced the system."

In retrospect, that was the biggest mistake I made during my 35 years as an Army officer.

The recently released review of the Katrina engineering issues by the American Society of Civil Engineers appears to me to reconfirm the need for those barriers, or something like them.

As too many continue to rush around to find someone to blame for the Katrina engineering failures, they can blame me. I gave up too easily.

Now I hope that the studies reconsider barriers at the east end of the lake, much like the storm surge protection used by the Dutch, the Brits and other nations.

Elvin B. "Vold" Heiberg III  
Lieutenant General  
U.S. Army (Retired)  
Arlington, Va.

## June 2009, USACE Flood Control Meeting In Slidell

- USACE held a meeting at the Slidell Harbor Center to an overflow crowd of approximately 1,000 people. The USACE wanted to focus on urban flood control projects, but the attendees shifted focus to a comprehensive Lake basin protection plan i.e. structures at the Chef Pass and Rigolets
- USACE's engineer, Tim Axtman said the Rigolets barrier plan has already been authorized and the barriers could be built within 7 to 10 years. Attendees were frustrated with the USACE's failure to commit to a Northshore protection plan and their poor responses to questions



### **January 2010, USACE Selects Local Projects Over Comprehensive Barrier Project**

- USACE ruled out comprehensive Lake Basin protection (structures at the Chef Pass and Rigolets) USACE stated local projects would be more receptive to getting approval as opposed to regional projects
- When Parish President, Kevin Davis, announced he would build a Slidell ring levee north of Eden Isles the EIFPC changed its focus from the Rigolets barrier to local protection
- Parish President, Kevin Davis, refused to study, model or have any discussions to evaluate impact the south Slidell levee will have on Eden Isles or extend storm surge protection to Eden Isles

### **August 2010, St. Tammany Parish Funds South Slidell Levee Project**

- The St. Tammany Parish Council passed a resolution to use \$1.7 million in state capital outlay funds to raise the south Slidell (Schneider Canal) levee which stretches from U.S. 11 to the Oak Harbor levee and from the Oak Harbor levee to Interstate 10, from 7 foot to 13 feet (the levee was subsequently raised to 16 feet)
- This put Eden Isles in a box between Highway 11, Interstate 10 and the south Slidell levee
- The only governmental agency authorizing the levee construction was the St. Tammany Parish Council
- The levee was built:
  - Without USACE approval
  - Without benefit of environmental impact studies
  - Without storm surge modeling
  - Without public meetings to assess the increase risk of flooding to Eden Isles



### **August 2010, USACE Needs A 533(d) Study Before Approving South Slidell Levee**

- Donna M. Urban, SELA Project Manager sent the following email:  
The Schneider Canal project has not been approved for construction by the Corps of Engineers; in fact, it has not yet entered upon the detailed study phase.

We are presently working to develop an acceptable project management plan for a 533(d) study for the project. The study would have to demonstrate that the Schneider Canal project is technically sound, environmentally acceptable, and economically viable in order for the project to be approved for construction. As part of the study effort, we would determine what effects the work would have on surrounding areas.

We anticipate that the 533(d) study would take at least three years to complete; however, funding for the study is not currently available. Initiation of the study is dependent on completion of the project management plan and on appropriation by Congress of the necessary funds. The only information we have for the Schneider Canal project is the twenty-year-old reconnaissance report.

Donna M. Urban  
Protection and Restoration Office  
Regional Projects Branch  
Project Manager, SELA, St. Tammany Parish  
504-862-1249  
FAX: 504-862-2108



### **September 2010, No Study Or Modeling Was Done For The South Slidell Levee**

- St. Tammany Parish Engineer, Paul Carroll, admitted no environmental impact study or modeling was done to evaluate the south Slidell (Schneider Canal) levee impact to Eden Isles

### **January 2011, State Senator Proposes South Slidell Breakwater**

- State Senator A.G. Crowe, proposes an offshore breakwater built from the Interstate 10 Bridge to the mouth of Bayou Liberty could protect the communities of Eden Isles, Carr Drive and Palm Lake from flooding during a hurricane



### **March 2011, Eden Isles Schedules Meeting With CPRA Consultant**

- EIFPC organized a community meeting with Mr. Steven Ward, Gulf Engineers & Consultants (GEC), the CPRA consultant that prepare a Northshore hurricane flood protection “Master Plan”. Unfortunately, Mr. Ward canceled a few hours before the meeting was scheduled to begin and did not respond to requests to reschedule the meeting with the EIFPC

### **July 2011, Eden Isles Holds Meeting With Local, And State Representatives**

- EIFPC organized a community meeting with Garret Graves, Chairman of the CPRA, State Representative Nita Hutter District 104, Greg Cromer, State Representative, District 90, A. G. Crowe, State Senator, District 1, Richard Artigue, St. Tammany Parish Councilman, District 13, Jerry Binder, St. Tammany Parish Councilman, District 12, and Ms. Sherri LeBas, Secretary, Louisiana Department of Transportation
- Mr. Graves said that comprehensive studies to assess Northshore storm risk factors and cost benefit studies associated with various protection projects are currently underway



### **November 2011, Request CPRA Model The South Slidell Levee And HSDRRS Impacts**

- EIFPC request CPRA model the increased surge impact to Eden Isles associated with the south Slidell levee and the Lake Pontchartrain Hurricane and Storm Damage Risk Reduction System (HSDRRS).
- CPRA responded; they are currently analyzing risk reduction projects in the Northshore vicinity, but “would not” look at the surge impacts on projects that have been previously constructed



## **April 2012, CPRA Adds The Lake Pontchartrain Barrier And Slidell Levee Project To The Master Plan**

Structural Protection	Lake Pontchartrain Barrier: Planning, engineering and design to construct a levee to an elevation of 24.5 feet across the mouth of Lake Pontchartrain from the New Orleans Landbridge to Interstate 59 north of Slidell for hurricane storm surge risk reduction. PLANNING AND DESIGN ONLY.	\$76M	001.HP.08p
	Slidell Ring Levee: Construction of a ring levee to an elevation of 16.0 feet around Slidell for hurricane storm surge risk reduction. Project features include approximately 20,000 feet of earthen levee and 16,000 feet of concrete T-wall.	\$81M	001.HP.13

## **May 2012, Request St. Tammany Parish Evaluate Surge Protection for Eden Isles**

- After Pat Brister became Parish President, the EIFPC met with the Parish Chief Administrative Officer (CAO), Mr. Bill Oiler. Mr. Oiler said he was contracting with a consulting firm to conduct an environmental study to determine the impact the Slidell levee will have on Eden Isles and he would look into ways to provide storm surge protection for Eden Isles

## **June 2012, The Overall Vulnerability Of The Slidell Area Cannot Be Overstated**

- CPRA's Northshore Hurricane/Flood Protection/Restoration Plan, prepared by GEC made the following



June 15, 2012

- The Lake Pontchartrain/Slidell region appears to be primarily impacted by storm surge and the Slidell area presents one of the greatest vulnerability risks for multi-flood hazards in the entire Northshore region. The level of potential for economic losses increases significantly as you move south towards the lake

### **Final Report**

### **NORTHSHORE HURRICANE/FLOOD PROTECTION/RESTORATION PLAN**

- The overall vulnerability of the Slidell area cannot be overstated, this central corridor of the Slidell area presents one of the greatest vulnerability risks for multi-flood hazards in the entire Northshore region
- Marsh restoration will offer little flood protection
- An offshore breakwater from the Interstate 10 Twinspan Bridge to the mouth of Bayou Liberty would protect the Northshore from flooding and slow down coastal erosion

## **June 2012, St. Tammany Parish Attempting To Fund Eden Isles Feasibility Study**

- Mr. Oiler, Parish, CAO, sent an email to the EIFPC, stating he had met with his engineering staff about elevating and using Highway 11 and Lakeview Dr. to extend storm surge protection to Eden Isles and said his staff was looking for funding for the feasibility study that will start the formal examination of the project

### **September 2012, St. Tammany Parish To Model Slidell Levee Impact And To Extend Protection**

- Mr. Oiler, Parish CAO, sent an email stating the Parish had identified funding to begin modeling the shoreline area to assess the Slidell levee impact and was negotiating a contract with a firm to do the modeling, he also said the Parish has had conversations with the Regional Planning Commission (RPC) and Department of Transportation and Development (DOTD) on using Highway 11 to extend flood protection to the communities affected by the Slidell levee

### **September 2012, U. S. Senator, David Vitter Demands HSDRRS Impact Study**

- U. S. Senator, David Vitter demanded a full and immediate examination of the HSDRRS to determine if it increased flooding to communities outside of the protection system

### **October 2012, Six Parishes Support Barrier Project**

- Six parishes unite in support for construction of barriers at the Rigolets and Chef Menteur Pass



### **November 2012, USACE Presents HSDRRS Findings**

- USACE held a public meeting to present their finding on HSDRRS flood impact from hurricane Isaac
- Colonel Fleming, Commander of the USACE New Orleans District Office, stated:
  - USACE only modeled 40% of their HSDRRS for impact to communities outside of the system
  - USACE supports the Barrier idea
  - USACE not sure if they still have the authority to study the Barrier Plan
  - Barrier impact to populated areas of Mississippi would be less than 6"
  - USACE has a policy of accepting responsibility to mitigate problems their projects cause



### **December 2012, Southeast Louisiana Flood Protection Authority-East Present Barrier Plan**

- The Southeast Louisiana Flood Protection Authority-East, unveiled their \$1.1 billion, 17-mile levee plan along the New Orleans East Land Bridge, stretching into St. Tammany Parish, to reduce hurricane storm surge flooding of communities along the Lake. The project may increase Bay Saint Louis' flood risk by six inches under worse case conditions

**New \$1.1 billion hurricane levee proposed for New Orleans East Land Bridge**

By Mark Schatzkin, NOLA.com | The Times-Picayune  
on December 19, 2012 at 5:54 PM, updated December 19, 2012 at 11:13 PM

A \$1.1 billion, 17-mile levee along the New Orleans East Land Bridge, stretching into St. Tammany Parish, to reduce hurricane storm surge flooding of communities along Lake Pontchartrain will be unveiled Thursday during a Thursday meeting of the Southeast Louisiana Flood Protection Authority-East.



### **January 2013, St. Tammany Working on Eden Isles Surge Protection**

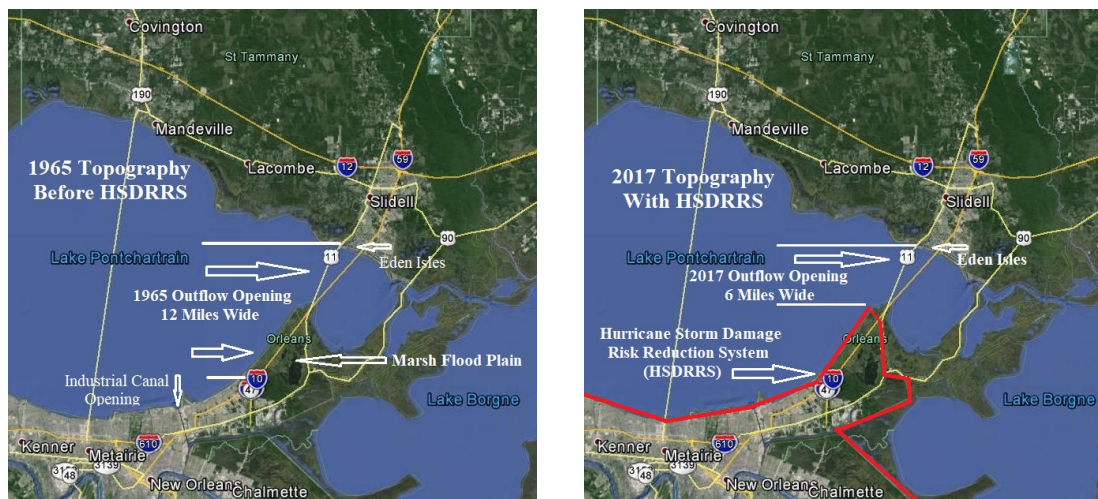
- The Eden Isles Flood Control Committee met with Mr. Oiler, the Parish CAO, and he stated he was still working on providing surge protection for Eden Isles, but the consultant's modeling contract was delayed and is now scheduled for completion in June 2013

### **February 2013, Request USACE Model 100% of HSDRRS**

- Request USACE model the entire HSDRRS, including construction prior to 2005 to determine impact to communities outside the system
- The request was made after USACE stated only 40% of HSDRRS was modeled for impact during their November 2012 meeting

### **April 2013, USACE Agrees To Model Entire HSDRRS To Determine Impact**

- USACE agreed to model the entire HSDRRS including construction prior to 2005 to determine Lake Pontchartrain surge differences with and without the HSDRRS (the models were scheduled for release by November 2013)



### **August 2013, Met With New St. Tammany CAO About Eden Isles Protection**

- The EIFPC met with Ms. Campo, the new Parish CAO, and was informed that the former CAO, Mr. Oiler, did not leave any record of our previous meetings or what he had been working on concerning mitigating the damage caused by the Slidell levee, and the Parish would have to start from scratch in the mitigation process
- Ms. Campo said storm surge modeling was “well on its way” and she would evaluate mitigation projects to extend flood protection to our community
- Ms. Campo agreed to meet with us in October, if not sooner, to provide a status report on the modeling and mitigation plans

### **September 2013, St. Tammany Parish Met With Congressional Delegation About Barriers**

- St. Tammany Parish President Pat Brister met with U. S. Senators, David Vitter and Mary Landrieu and U. S. Representative Steve Scalise to push for surge barriers at the Rigolets and Chef Menteur Pass

### **November 2013, St. Tammany Parish Determines Eden Isles Protection Is Too Costly**

- St. Tammany Parish CAO, Ms. Campo met with the EIFPC and stated: the modeling would be delayed until July 2014, and extending surge protection to the Eden Isles community would cost too much and therefore the parish has no viable plan to mitigate the Slidell levee damage
- The EIFPC emailed Ms. Campo requesting the opportunity to work with the Parish Engineering office to develop a cost efficient surge protection plan for Eden Isles



### **December 2013, St. Tammany Initially Agreed To Work With Eden Isles To Find A Solution**

- Ms. Campo responded to Eden Isles' request to work with the Parish to develop a cost efficient surge protection plan for Eden Isles with the following: I am looking for the proper vehicle for your participation. I am also continuing to work with my staff to prepare an action plan to address your concerns. I will set up a follow up meeting with you immediately after the holidays. (Ms. Campo never followed up or responded to additional requests to work together in developing a cost efficient surge protection plan for Eden Isles)

### **January 2014, EIFPC Expands Its Base**

- The EIFPC expanded its base by including representation from all five subdivisions within the greater Eden Isles community and changed its name to the East St. Tammany Storm Protection Committee (ESTSPC)
- The ESTSPC worked with Senator Crowe and Parish President Brister to establish the St. Tammany Levee Board and added the requirement that at least four of the nine board members be residents of unincorporated areas of the district

### **2014, St. Tammany Parish Submitted Its CPRA 2017 Master Plan Projects**

- St. Tammany Parish requested \$362,694,957 for marsh protection projects and \$0 to study storm surge protection for Eden Isles or any other unincorporated community within St. Tammany Parish
- The Parish's submittal stated: Extending south Slidell levee protection was "not practical or feasible"; and elevation is the "only" way to protect structures south of the Slidell levee

### **October 2014, ESTSPC Develops Plan For Eden Isles**

- The ESTSPC developed its own structural storm surge protection plan for Eden Isles to demonstrate both feasibility and cost benefit.
- The Eden Isles protection plan was submitted to the CPRA, with the request to study the feasibility of the plan as part of their 2017 Master Plan
- The CPRA refused to consider ESTSPC's request for a Feasibility Study, because the ESTSPC was not a governmental agency, and St. Tammany Parish Government already concluded protecting Eden Isles was not practical or feasible



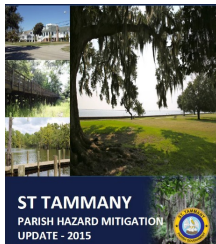
### **December 2014, St. Tammany Levee Board Holds First Meeting**

- The new Louisiana St. Tammany Levee, Drainage and Conservation District (STLDCD) is establish and held its first meeting
- The ESTSPC presented their Eden Isles storm surge protection plan to the STLDCD and asked the board to request a feasibility study for the Eden Isles community
- STLDCD supported the need for an Eden Isles feasibility study, but lacked authority and could not take action until the commissioners are approved by the State Senate



## **February 2015, St. Tammany Parish's Hazard Mitigation Plan Includes Eden Isles Project**

•

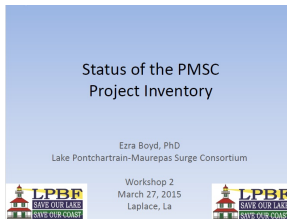


### **ST TAMMANY PARISH HAZARD MITIGATION PLAN A-4**

The most notable involvement of communities and outside agencies is the East St Tammany Storm Surge Mitigation Project Action 1.2.8 that was presented by the Eden Isles Homeowners Association to St. Tammany Parish. Through the Public Meeting and additional local and parish meetings, this action item was added to the St. Tammany mitigation action table (found in section 4). This mitigation action may include the following entities: Louisiana Coastal Protection & Restoration Authority (CPRA), Louisiana Department of Transportation and Development, Regional Planning Commission, the communities of Eden Isles, Clipper Estates, Lakeview, Moonraker, Oak Harbor, Mariner's Cove, The Fairways, The Inlets, Cypress Lakes, Grand Champions, Masters Point and The Moorings, along with the various businesses located within the project area.

## **March 2015, Lake Pontchartrain-Maurepas Surge Consortium includes Eden Isles Project**

•



Levee around Eden Isles, Oak Harbor, & Clipper Estates	St. Tammany	East St. Tammany Storm Protection Committee	Early proposal	South of Slidell, between I-10 and Hwy 11
Northshore Beach Breakwater	St. Tammany	Senator Crow	Early proposal	South of Slidell, between I-10 and Hwy 11, 1,200 ft offshore

## **September 2015, St. Tammany Levee Board Supports Grant For Eden Isles Protection**

- STLDCD submits letter in support of adding the Eden Isles protection project to St. Tammany Parish's Resiliency Grant

## **September 2015, DOTD Closes South Slidell Levee Gap**

- DOTD elevated Highway 11 to close the gap in the south Slidell ring levee that separates Slidell from Eden Isles without evaluating its flood impact to Eden Isles
- DOTD considered the Highway 11 elevation as an existing condition to raise the highway to match the adjacent levee height with out further study
- The DOTD project was not an endorsement of the levee, but rather an accommodation to a local entity (The issue is: the levee was not already in place across highway 11)



## **November 2015, St. Tammany Levee Board Formally Request Adding Eden Isles To Master Plan**

- STLDCD makes a formal request that the CPRA 2017 Master Plan add a feasibility study to extend Slidell levee protection to Eden Isles

## **January 2016, Lake Pontchartrain Basin Foundation Request USACE Update Their Lake Analysis**

- Lake Pontchartrain Basin Foundation (LPBF), request USACE update their analysis of surge and wave conditions for the HSDRRS to provide a broader understanding of hurricane rotational surge dynamics in Lake Pontchartrain, and its impact on communities around the lakes

## **January 2016, CPRA Disapproves St. Tammany Levee Board's Request For Eden Isles Study**

- Justification for the CPRA's disapproval for the Eden Isles feasibility study is based upon the possibility of a lake basin barrier plan, at some point in the distant future

### **January 2016, St. Tammany Parish President Supports Adding Eden Isles Study Into Master Plan**

- St. Tammany Parish President, Pat Brister submits a letter supporting STLDCD's request to add a storm surge protection feasibility study for southeast St. Tammany (Eden Isles) into the CPRA's 2017 Master Plan

### **February 2016, State Representative, Cromer Supports Adding Eden Isles Study Into Master Plan**

- State Representative, Greg Cromer submits a letter supporting STLDCD's request to add a storm surge protection feasibility study for southeast St. Tammany (Eden Isles) into the CPRA's 2017 Master Plan

### **February 2016, State Senator, Sharon Hewitt Supports Adding Eden Isles Study Into Master Plan**

- State Senator, Sharon Hewitt submits a letter supporting STLDCD's request to add a storm surge protection feasibility study for southeast St. Tammany (Eden Isles) into the CPRA's 2017 Master Plan

### **February 2016, CPRA Instructs Parish And Levee Board To Do A Reconnaissance Study**

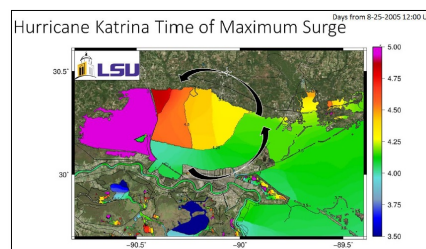
- In response to St. Tammany Levee Board's request for an Eden Isles Project Feasibility Study, the CPRA instructed the parish and levee district to work together to prepare a scope of work for a reconnaissance study to identify optimum Northshore flood protection measures needed
- The study was funded with the \$2 million initially approved for the Slidell ring levee
- The Parish and levee district will determine the scope, implementation and next steps based on analysis, recommendations and benefit cost analysis set forth in the reconnaissance study (the study was a direct result of Eden Isles' request for the study and it was understood that the study would specifically address levee protection to Eden Isles)

### **May 2016, St. Tammany Parish Not Willing To Specifically Address Eden Isles Levee Protection**

- During the May STLDCD meeting, St. Tammany Parish Government said it would conduct a parish wide "Master Plan" assessment, but it would not specifically address extending Slidell levee protection to Eden Isles

### **May 2016, Report On Lake Pontchartrain Storm Surge Dynamics Is Released**

- Pontchartrain-Maurepas Surge Consortium releases its report on Lake Pontchartrain storm surge dynamics
- The report focused on surge rotation within the lake basin and its impact on outflow impact and explains why highest surge in the Slidell area can occur after the storm has moved inland
- The LPBF recommends a surge rotation model for the lake basin, which shows areas that are most at risk based on the location of the eye of the storm and the surge rotation model



### **June 2016, CPRA Meeting To Address Eden Isles Surge Protection**

- President of the Moonraker Civic Association, held a meeting with Mr. Bradberry, the Governor's Executive Assistant for Coastal Activities to notify Mr. Bradberry that St. Tammany Parish Government was not complying with the CPRA direction to address Eden Isles surge protection
- Mr. Bradberry, re-affirmed that the CPRA's direction was to study how to extend south Slidell levee protection to Eden Isles





### **June 2016, St. Tammany Parish Still Will Not Specifically Address Eden Isles Levee Protection**

- At the June STLDCD meeting, Parish Government once again stated the CPRA direction was to conduct a parish wide Master Plan not to specifically address extending south Slidell protection to Eden Isles (this was a contradiction of Mr. Bradberry's direction to evaluate extending south Slidell levee protection to Eden Isles)

### **June 2016, St. Tammany Initially Agreed To Meet With Eden Isles Then Failed To Do So**

- At the US Highway 11 Widening (Spartan Drive to Lake Pontchartrain) Public Hearing St. Tammany Parish CAO, Ms. Campo, said she would meet with Eden Isles to discuss incorporating the Highway 11 project into a surge protection plan for Eden Isles, and would set up a meeting the following week (Ms. Campo never followed up on her commitment to meet with Eden Isles)

### **August 2016, St. Tammany Coastal Master Plan Will Address A Protection Plan For Eden Isles**

- State Senator Hewitt convened a meeting between St. Tammany Parish Government, STLDCD representatives and the ESTSPC to resolved issues associated with the CPRA's "St. Tammany Parish Coastal Master Plan and Reconnaissance Study" scope of work. It was agreed that a protection plan for Eden Isles would be specifically addressed in the Parish Coastal Master Plan and Reconnaissance Study

### **August 2017, Meeting To Mitigate Induced Flooding From South Slidell Levee**

- U. S. Congressman Scalise's office held a meeting with the USACE, the CPRA, STLDCD commissioners, St. Tammany Parish representatives, the ESTSPC, and the presidents of the HOAs impacted by the south Slidell levee. This was the first time all the players have come together to discuss Eden Isles' surge protection needs
- The meeting highlighted the critical need for storm surge protection and demonstrated the community's involvement in working towards a solution to mitigate the damage caused by the south Slidell levee



### **March 2018, Freedom Of Information Act Request To Obtain USACE Hydraulic Report**

- A Freedom of Information Act (FOIA) request was made to release USACE's Evaluation of Storm Surge with and without the HSDRRS
- This document was originally scheduled for release in November 2013



### **March 2018, Suzanne Krieger Appointed To St. Tammany Parish Levee Board**

- Louisiana Governor, John Bell Edwards, appoints Suzanne Krieger to the STLDCD

### **June 2018, STLDCD Commissioner Goes to Washington DC**

- STLDCD commissioner Suzanne Krieger traveled to Washington D.C. and met with Senator Kennedy, Senator Cassidy, Representative Scalise and Representative Graves to request flood protection for St. Tammany Parish

### **June 2018, USACE Refuses To Comply With Freedom Of Information Act Request**

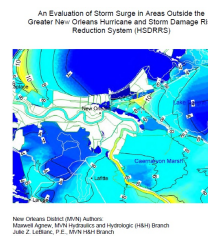
- USACE denied the FOIA request to release their HSDRRS impact report, claiming deliberative process privilege

### **July 2018, USACE's FOIA Request Denial Is Appealed**

- A Freedom of Information Act FOIA appeal request was made to release the USACE's Evaluation of Storm Surge with and without the HSDRRS

### **August 2018, USACE Releases Their Hydraulic Report On HSDRRS Impact**

- In response to the FOIA appeal, the USACE released their evaluation of storm surge outside of the HSDRRS.
- Topographic errors in USACE's 1965 baseline model were found and submitted to the USACE for their evaluation
- The errors invalidated model finding about the HSDRRS's impact on communities outside of the system



### **September 2019, USACE's St. Tammany Feasibility Study Receives Funding**

- A flood control feasibility study for St. Tammany Parish receives funding under a 3X3X3 program in which the study will be completed in no more than 3 years, cost no more than \$3 million and require 3 levels of vertical coordination

### **January 2020, USACE Makes Corrections To Their Hydraulic Report**

- USACE admitted their HSDRRS baseline 1965 model contained errors and corrections were made to the report
- The revised hydraulic report showed HSDRRS significantly increased surge impact to Eden Isles

### **February 2020, USACE Kicks-off Their St. Tammany Flood Protection Feasibility Study**

- The USACE held a public “kick-off” meeting for their new St. Tammany Flood Protection Feasibility Study
- USACE explained their “3 by 3 by 3” study format, and the process of selecting a project for development
- A project will be tentatively selected by January 2021
- The Final Feasibility Report release date is June 2022
- The Chief's Project Milestone Report date is 2023



### **March 2020, St. Tammany Parish Coastal Protection Gap Analysis Is Released**

- The Gap Analysis Report identifies and describes gaps in St. Tammany Parish's flood protection along with recommendations for further study/actions to address gap areas
- An Eden Isles storm surge protection project was included in the study's structural protection projects alternatives

ST. TAMMANY PARISH COASTAL PROTECTION  
GAP ANALYSIS  
MARCH 2020

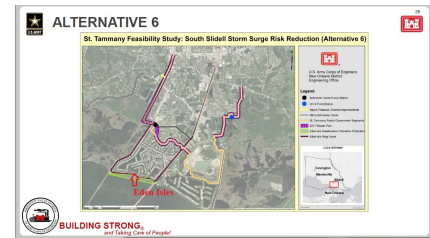


CONTRACT NO. 18-019 (PO-167) – TASK II  
SPONSORED BY:



## **April 2020, USAE Identifies 11 Alternative Projects For St. Tammany Parish Flood Study**

- USACE releases 11 alternative projects to the St. Tammany Parish flood protection study that will undergo screening for final selection and development.
- Alternative 6 included extending a 100-year ring levee around Eden Isles and was immediately rejected due to cost
- USACE refused to evaluate a cost effective 50-year ring levee around Eden Isles



## **June 2021, USACE Released Their St. Tammany Parish Feasibility Study Recommendations**

- USACE will only consider a 50-year nonstructural plan for Eden Isles, while providing the rest of St. Tammany Parish with 100-year protection from structural and nonstructural projects
- USACE proposes elevating the south Slidell levee and extending it west to Lacombe. This levee, along with Lake Pontchartrain's south shore levees, will increase Eden Isles storm surge impact
- Only a fraction of the homes in Eden Isles will benefit from the 50-year elevation project and the community's extensive infrastructure will remain exposed to storm surge
- The Slidell levee extension to the east left-out many vulnerable subdivisions and critical electrical substations

## July 2021, St. Tammany Levee Board Submits Questions And Concerns To USACE

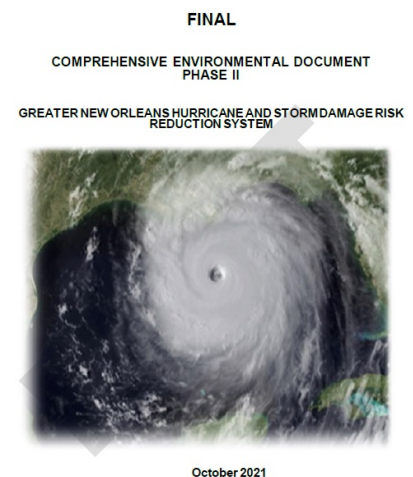
- STLDCD submitted a list of comments associated with USACE's St. Tammany Parish Feasibility Plan that does not provide adequate protection for Eden Isle and poor levee alignments that leave 5 major electrical substations unprotected

## July 2021, CPRA Approves A Surge Protection Plan For The Eden Isles

- In response to USACE's failure to adequately protect Eden Isles, the CPRA approved a surge protection plan for the Eden Isles community (Eden Isles, Oak Harbor, Moonraker & Clipper Estates). The CPRA plan will provide comprehensive structural protection for the Eden Isles Community
- The CPRA protection plan will go forward with or without USACE support and should be completed within three to five years

## **October 2021, USACE Release HSDRRS's Environmental Document With Surge Impact Errors**

- USACE's Final Comprehensive Environmental Document (CED) Phase II Greater New Orleans Hurricane and Storm Damage Risk Reduction System (HSDRRS) used an incorrect 2013 hydraulic report to determine surge impact finding on communities outside of the system
- USACE corrected their hydraulic report in January 2020, showing greater surge impact to Eden Isles and other communities outside of the system but failed to incorporate the corrected hydraulic impact data in their CED





### **April 2022, Eden Isles' Financial Risk is Highest In The State**

- A 2022 CPRA study concluded that southeast St. Tammany Parish has the greatest financial risk (future without action risk) than any other community in the state of Louisiana! Based upon this study, the CPRA makes southeast St. Tammany Parish a priority and will add a structural protection plan for Eden Isles into the state master plan

### **Projected storm surge damage costs**

If no new measures to reduce storm surge flooding are taken, half the expected damage in the next 50 years would occur in these 10 Louisiana communities. Here is the amount of damage each community could expect to receive:



### **June 2022, USACE Extends Its St. Tammany Flood Protection Feasibility Study**

- USACE is given an additional \$1.7 million to extend its three-year St. Tammany Flood Protection Feasibility Study by eighteen months in order to address concerns raised by the STLDCD

### **September 2022, USACE Is Asked To Reevaluate The Lake Pontchartrain Barrier Plan**

- The Regional Planning Commission unanimously approved a resolution, requesting federal authorization and funding for the Lake Pontchartrain barrier project's reevaluation.

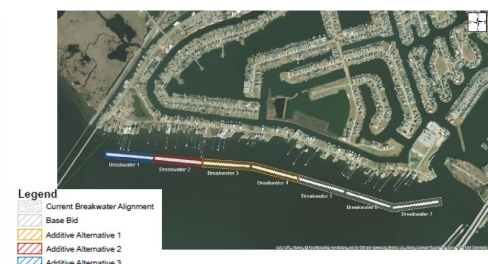


### **November 2022, CPRA Includes Eden Isles Protection Plan Into The State Master Plan**

- As a result of USACE's decision not to adequately address Eden Isles flood protection needs, and the community's vulnerability, the CPRA agreed to include an Eden Isles structural protection plan into their State Master Plan.

### **April 2023, South Slidell Breakwater Project Begins**

- A St. Tammany Parish breakwater project begins data collection and design modeling
- Project to deflect waves, absorb wave energy, and stop beach erosion
- Project to provide shoreline infrastructure protection
- Project to improve aquatic creature habitat



### **June 2023, Capital Outlay Bill Allocates Funding For Eden Isles Project**

- Capital Outlay Bill Allocates \$1,500,000 of the Priority 1 appropriation, and \$3,000,000 of the Priority 5 appropriation from General Obligation Bonds be used for the Eden Isle Roadway Infrastructure Flood Resilience, Planning and Construction project in St. Tammany Parish

### **June 2023, Eden Isles Project is given Notice to Proceed**

- CPRA gives approval to initiate the Eden Isles Flood Risk Reduction and Resilience project

#### **April 2024, Lakeview Drive Residents Have Breakwater Concerns**

- Lakeview Dr. residents submit concerns about the breakwater's impact
- STLDCD assist the St. Tammany Parish by collecting concerns & design consultant's response
- Project is delayed until St. Tammany Parish address resident's concerns

#### **July 2023, USACE Completes Their Extended St. Tammany Flood Protection Feasibility Study**

- After extending the St. Tammany Flood Protection Feasibility Study by eighteen months in order to address concerns raised by the STLDCD, the revised feasibility study was released without any significant changes and did not address issues raised by STLDCD
- USACE prepares to begin its Pre-construction Engineering Design (PED) review of the project

#### **March, 2025, STLDCD Request Meeting With USACE**

- STLDCD submits concerns about proceeding with St. Tammany's flood risk management PED and request meeting to discuss issues associated with the project that were not addressed in the eighteen month study extension

#### **April 2025, CPRA Assigns An Elevation Of 11' To Eden Isles' Structural Protection Project**

- CPRA commits to design the Eden Isle Flood Risk Resiliency project to achieve a minimum elevation of +11' NAVD88

#### **August 2025, Eden Isles Protection Needs To Be In Place Before USACE Levees Are Built**

- STLDCD requested the CPRA coordinate closely with USACE to ensure the state's structural protection project for Eden Isles is completed in its entirety before USACE begins its St. Tammany Parish levee construction

#### **Acronyms:**

EIFPC – The Eden Isles Flood Protection Committee

ESTSPC - The East St. Tammany Storm Protection Committee

HSDRRS - The Lake Pontchartrain Hurricane and Storm Damage Risk Reduction System

CPRA - The Louisiana Coastal Protection and Restoration Authority

DOTD – The Louisiana Department of Transportation and Development

STLDCD – The St. Tammany Levee, Drainage and Conservation District

FOIA - Freedom of Information Act

PED - Pre-construction Engineering Design