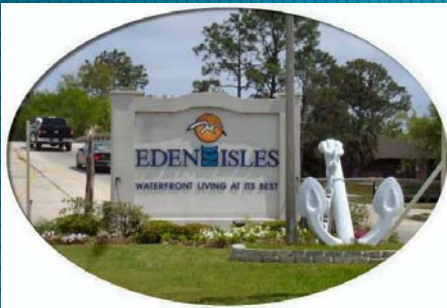


*Welcome!!*

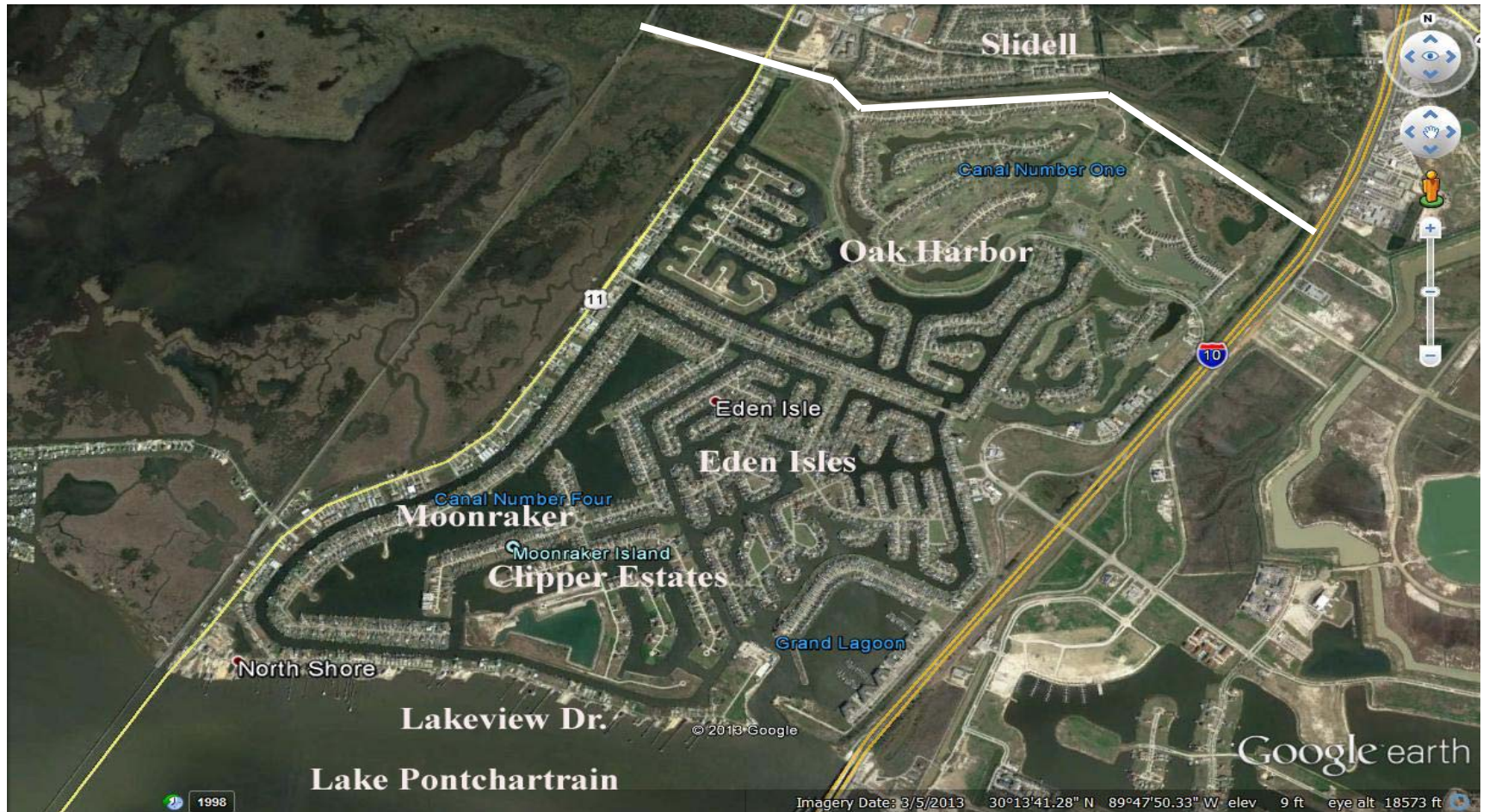
*Eden Isles Homeowners  
Association*

*General Membership Meeting*

*3/11/14*



# *At Risk Communities*





# *East St. Tammany Storm Protection Committee*



## *Executive Briefing*

### *Storm Threats, Risk Assessments and Committee Efforts and Directions*

*Prepared for:*

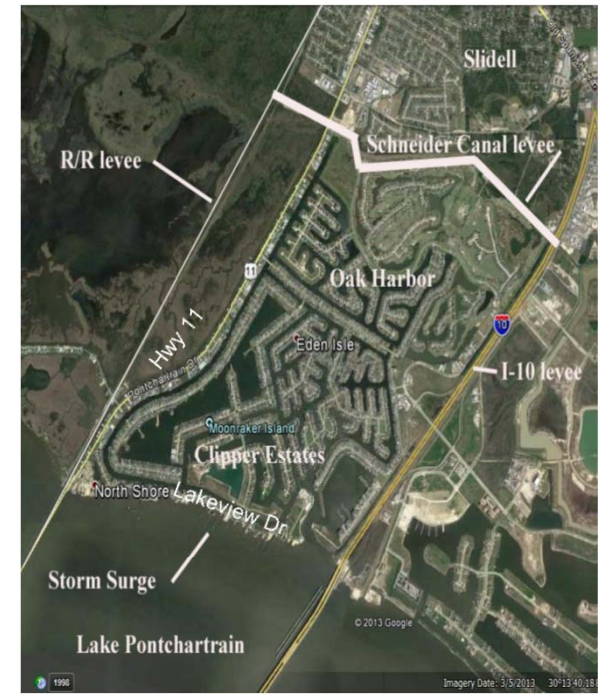
*Ms. Pat Brister – St. Tammany Parish President*

*Mr. A.G. Crowe – LA State Senator – District 1*

*February 26, 2014*

# Agenda

- ***Introductions and Opening Remarks***
  - ***East St. Tammany Storm Protection Committee***
    - ***Charter / Members / Credentials***
    - ***Briefing Purpose***
      - ***Executive Awareness, Commitment and Critique***
- ***Flood Threat Assessments***
  - ***Surge Levels and Probabilities***
- ***Risks and Impacts***
  - ***Property, Economic and Environmental Losses***
  - ***Recovery Costs / Property Value / Tax Revenue Exposure***
- ***Call To Action / Committee Activity Status***
  - ***Committee's Strategic Plan – Approach , Structure, Status***
  - ***Community Coalitions***
  - ***Modelling Efforts and Plans***
  - ***Potential Solutions and Scopes***
- ***Next Steps – Commitments, Requested Guidance and Critiques***
- ***Action Items / Closing Remarks***



# Introductions and Opening Remarks

## ➤ East St. Tammany Storm Protection Committee

### • Committee Charter

- *Representing the interests of the following communities*
  - ✓ *Lakeview Drive / Moonraker / Clipper Estates / Eden Isles / Oak Harbor*
  - ✓ *Provide the necessary citizen leadership, expertise and focus*
  - ✓ *To achieve 100-year level storm protection from the Lake Pontchartrain Basin , and surrounding areas, for the 7,041\* residents of these communities*

### • Current Members / Credentials

- Thomas Thompson – 30+ years resident of Eden Isles
  - ✓ *BS Engineering Technology / MBA / 30+ years engineering experience – drainage, subdivision development / Recognized for many years for related issue research, pursuit of governmental support and authorship of pertinent analytical reports*
- John Faust – 28 year resident of Moonraker
  - ✓ *Electrical engineering / 20+ years as NOPD municipal preparedness and emergency response planner / Recognized for many years of related issue research, pursuit of governmental support and authorship of pertinent analytical reports*
- Dr. Patrick Fitzpatrick – 13 year resident of Lakeview Drive
  - ✓ *PhD – Meteorology / Professor and consultant on weather issues, hurricanes, storm surge, numerical modeling / Publications and books on hurricanes / Various professional committees for meteorology and hurricanes*
- Dennis Strecker – 22 year resident of Carr Drive / Property owner – Eden Isles
  - ✓ *ME Mechanical Engineering, PE / 30+ years Corps of Engineers / Independent Consultant to Corps for: surge gate designs and multiple mechanical problem resolution engagements*
- Louis Sandoz – 10 year resident of Eden Isles
  - ✓ *BS Electrical Engineering / Electrical and IT systems engineering / MBA / Licensed General Contractor / Certified Project Manager, PMP / 40 + years in project planning, development and implementations*



\* 2010 Census



# *Introductions and Opening Remarks*

## ➤ *Briefing Purpose – Executive Awareness, Commitment and Collaboration*

- ***Provide*** an awareness of our committee's existence, purpose, approach, efforts-to-date and directions
- ***Seek*** President Brister's and St. Tammany Parish government's commitment and sponsorship
  - *Our committee's efforts*
    - ✓ *Establish short and longer term plans of action*
    - ✓ *Identify and sponsor engineered solutions*
    - ✓ *Drive the mechanisms and funding for the construction project*
- ***Seek*** Senator Crowe's commitment and sponsorship
  - *Our committee's efforts*
    - ✓ *Achieve State level recognition of our problem*
    - ✓ *Achieve State level involvement in developing a solution, and supporting the Parish*
    - ✓ *Secure funding and scheduling commitments to go forward with construction*
- ***Seek*** your executive level collaboration, critique and advice, regarding
  - *What we have presented, as a matter of content,....*
  - *How effectively it was formatted and presented,....and most importantly,*
  - *What are your recommendations, regarding*
    - ✓ *Proper and most expeditious next steps*



# Flood Threat Assessments

## ➤ Surge Levels and Probabilities

### • *Lake Pontchartrain Surge History - Lakeview Drive*

#### • *Excludes wave action, rainfall, or watershed runoff*

- ✓ *Isidore - September, 1990 - 6 ft.*
- ✓ *Lili - October, 1990 - 5 ft.*
- ✓ *Katrina - August, 2005 - 15 ft.*
- ✓ *Gustav - August, 2008 - 6 ft.*
- ✓ *Isaac - August, 2012 - 8 ft.*

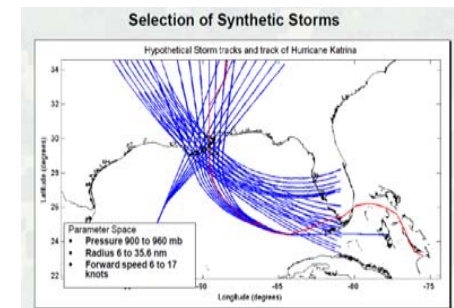


### • *Projected Lake Pontchartrain surge-only level / Interpretation*

- *100-year storm=> estimated at 10 ft.-13 ft. / 1% chance of occurring, in any given year*

### • *Schneider Canal Levee*

- *Heightens storm surge threat to our area*



# Risks and Impacts



## ➤ Property, Economic and Environmental Losses

- *It is difficult to comprehend that, after having experienced Katrina and “lesser” events , and the resulting*

- *Economic impact and recovery costs;*
- *Environmental damage, some of which was permanent, and*
- *Immeasurable loss in our collective human spirit,*

*We have not found the public and political will to meet this threat*



## ➤ Recovery Costs / Property Value Loss/ Tax Revenue Exposure

- *For the most part, our homes are the centerpieces of our personal net worth*
- *One more “Katrina”, and we need not worry about reasonable flood insurance rates.....we will have a **virtually worthless “dead zone”** on our hands*

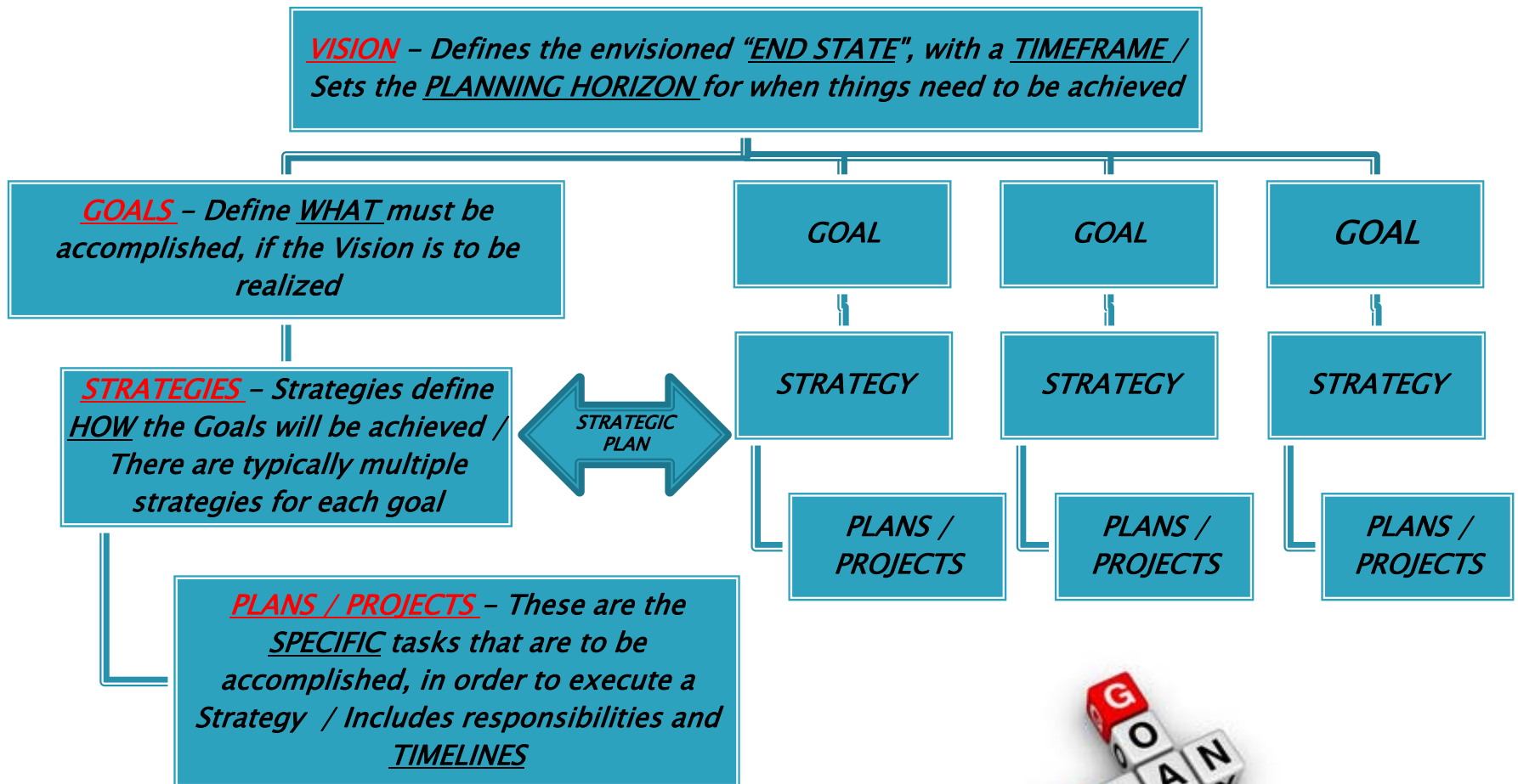








# Our Strategic Plan's Structure



# Our Strategic Plan's Status

## > Vision

- **Within five years**, starting on 1/1/2014, a storm surge protection system (SSPS) **will be in place** ,
  - ✓ Based on the **100-year storm surge projection** from the waters of Lake Pontchartrain, and surrounding sources,
  - ✓ protecting the Lakeview Drive / Moonraker / Clipper Estates / Eden Isles / Oak Harbor communities

## > Goals

- **Create** coalitions among the named communities
  - ✓ Maximize governmental agency and political executive support, at all levels
- ✓ **Establish** scientific leadership and governmental agency collaboration
  - ✓ Produce feasible engineering and construction solutions, and funding estimates
- ✓ **Solidify** public and private funding coalitions to enable construction
- ✓ **Solidify** political coalition to guide and assure governmental backing and funding

## > Strategies

- ✓ **Create** a baseline committee to drive the citizen components of all Goals
- ✓ **Recruit and establish** the community coalitions and calls to action
- ✓ **Generate** the political interest and backing required for all Goals
- ✓ **Review** existing science studies and reports, supporting the target SSPS



## > Plans / Projects

- **Present** the committee and its concepts to President Brister and Senator Crowe., and **seek commitments**



# Committee Activity Status



## ➤ Community Coalitions

- **Broaden** the Committee's membership
  - ✓ Assures inclusion of all affected community interests, as well as,
  - ✓ Provides focal point for coalition of respective homeowner associations
  - ✓ Fosters voter awareness, where appropriate

## ➤ Threat Modelling Results – Efforts and Plans

- Through the efforts of Dr. Fitzpatrick and Mr. Strecker, we **have begun researching** the availability of surge threat and Lake behavior modelling results, in order to better understand
  - ✓ The state of the “science”
  - ✓ Its relevance and applicability, and therefore,
  - ✓ What would be required to complete the analysis of threats, behaviors and possible solutions for costing and approvals





# Committee Activity Status

## ➤ Potential Solutions and Scopes

- *Possible solutions are listed here for each:*

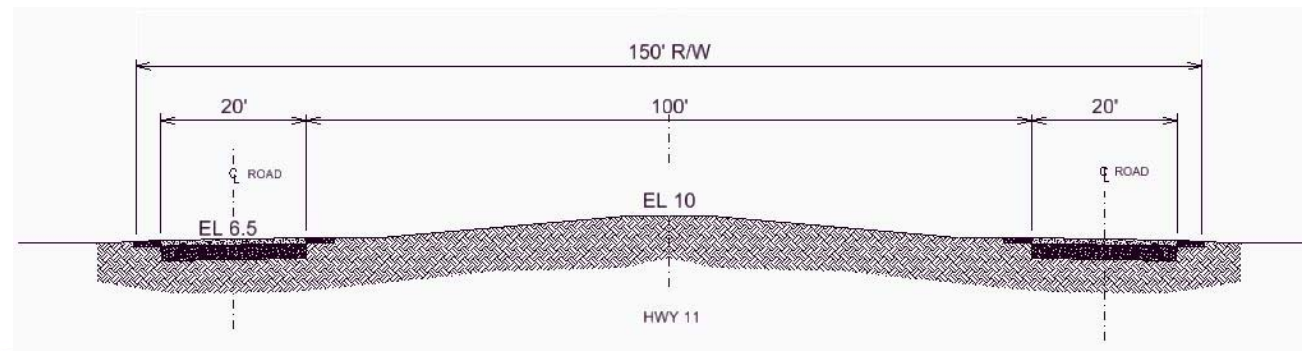
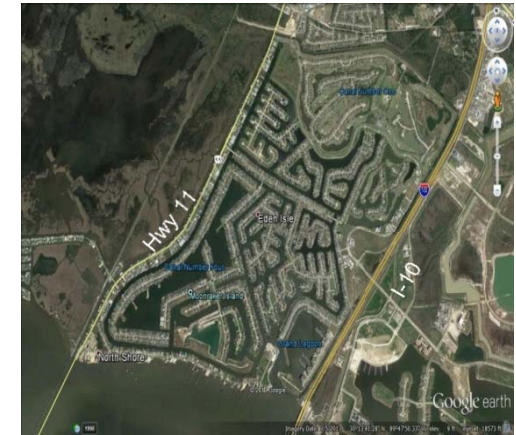
### ✓ I-10



- *If existing elevations prove inadequate , there is **sufficient right-of-way** to make necessary embankment enhancements to block surge from the target area*

### ✓ Highway 11

- *By utilizing the **Regional Planning Commission's proposed redesign and construction of Highway 11**, the existing 150 foot wide highway right-of-way can incorporate an earthen levee, between travel lanes, to block the Lake's surge from entering the target area*





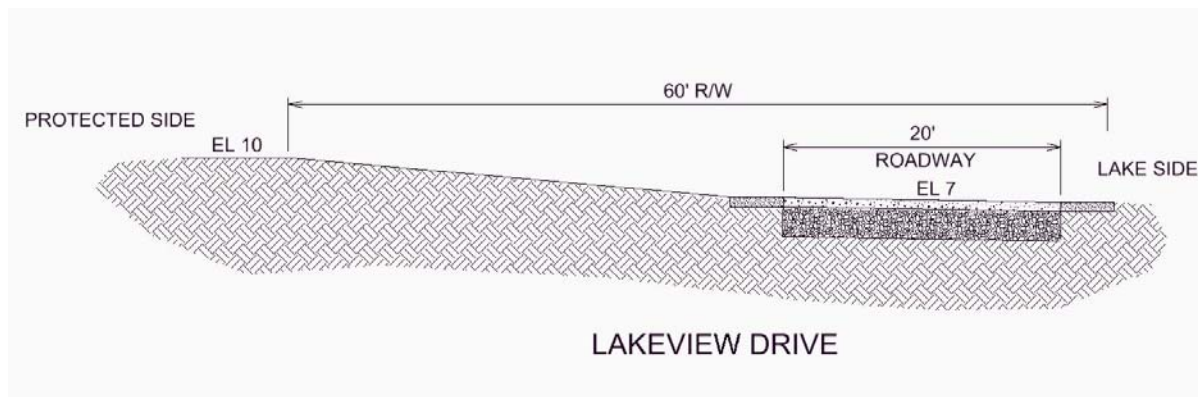
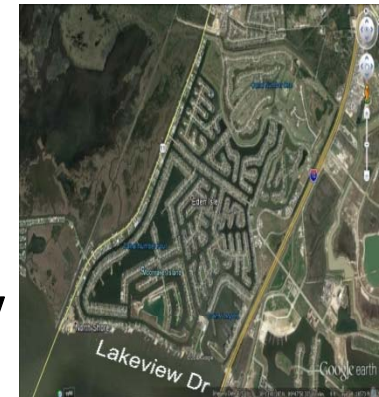
# Committee Activity Status

## ➤ Potential Solutions and Scopes (continued)

### ✓ Lakeview Drive / Lake Pontchartrain

- Surge modelling will determine the elevations required
- Possible solution sets

✓ **Modify** Lakeview Drive , and include a marina gate system



✓ **Utilize** a combination of a significant breakwater system in the Lake, along with a less intrusive mediation of Lakeview Drive, and a marina gate system



✓ **Construct** a levee , appropriately far enough into the Lake, parallel to Lakeview Drive, with an access gate system

## Next Steps – Commitments, Requested Guidance and Critique

### ➤ Briefing Recap

- *Introduced Our Committee / Briefing Purpose*
- *Flood Threat Assessments / Risks and Impacts*
- *Committee’s Strategic Plan / Activity Status*
- *Potential Threat Solutions*



### Requests for St. Tammany Parish and State Level Commitments / Collaboration

- *President Brister's and St. Tammany Parish's commitment, sponsorship and assistance*
    - *Establish short and longer term plans of action / Identify and sponsor engineered solutions / Drive the mechanisms and funding for the construction project*
  - *Senator Crowe's commitment, sponsorship and assistance*
    - *Achieve State level recognition of our problem / Achieve State level involvement in developing a solution / Obtain funding and scheduling commitments to go forward with construction*
- (continued)

## Next Steps – Commitments, Requested Guidance and Critique

- Executive Critique : Presentation, Committee Approach and Directions
  - *Presentation content, format, and effectiveness*
    - *Critique and advise*
  - *Proper and most expeditious next steps*
    - *Assuming Parish sponsorship, **proceed with***
      - ✓ *The Coastal Protection & Restoration Authority (CPRA) ?*
      - ✓ *The Southeast Louisiana Flood Protection Authority – East ?*
  - *Once the appropriate lead agency is identified*
    - ***Provide** advice, on the procedure we need to follow to have this regional project approved and implemented, **on or before our target implementation schedule***

➤ Action Items / Closing Remarks





# *At Risk Communities*

